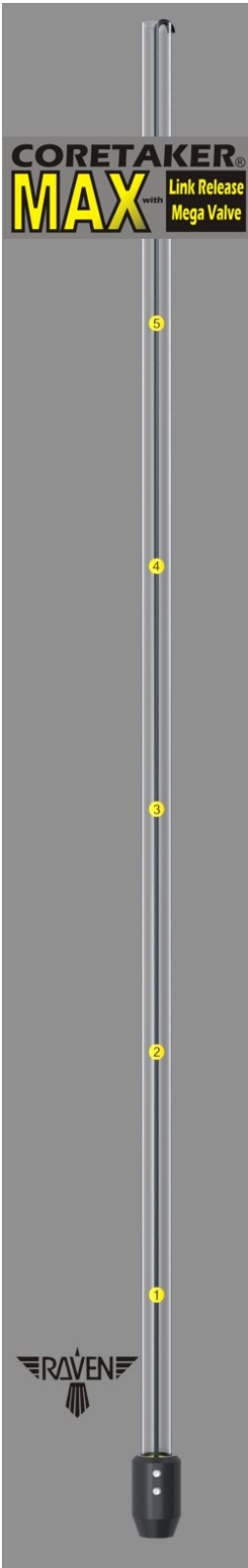
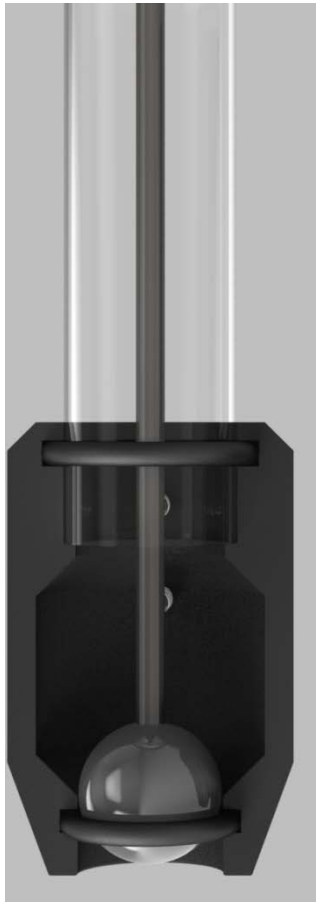


CORETAKER® MAX 1-PIECE CORE SAMPLER

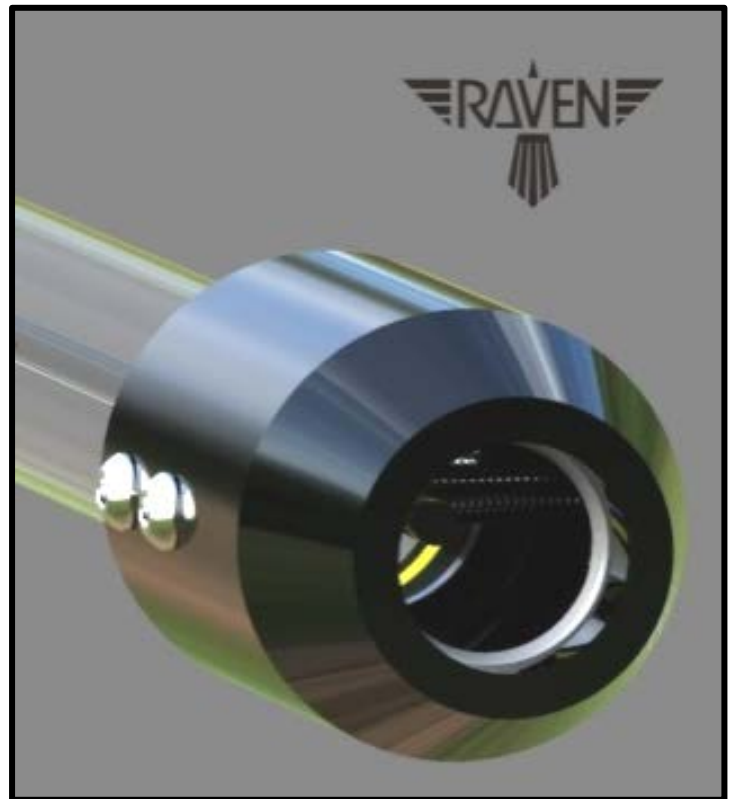
CORETAKER® MAX is used in septic tank and grease interceptor maintenance to view and check sludge and solids levels. Link release mega valve takes up the heavy sludge.



Tubes are Polycarbonate 1.50" OD for maximum strength



- ✓ HUGE INTERIOR CAVITY
MAX FLOW THRU
- ✓ LINK RELEASE MEGA VALVE
MAX CONTROL
- ✓ STAINLESS STEEL FASTENERS
MAX QUALITY
- ✓ INTERNAL O-RINGS
MAX LEAK PREVENTION
- ✓ 1.5 inch POLYCARBONATE TUBE
MAX DURABILITY



Raven Environmental Products, Inc.
St. Louis, MO 63122
800-545-6953 or online www.ravenep.com



8 foot model B-40404-8
5 foot model B-40404-5